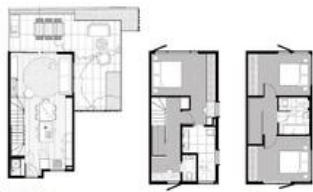


Sold



14, 225-227 Williams Road, South Yarra



MANTEAU TOWNHOMES

Townhouse 14 has now become available.

Exclusive developer final release and the last remaining townhouse available. This is your final opportunity to get in on the best development seen in South Yarra for some time.

Manteau is ideally located in South Yarra, Melbourne's most sophisticated and sought after suburb, and enjoys ready access to the very best of our city parks, a selection of Melbourne's most sought after schools, high fashion, fine dining and creative culture.

14 architecturally designed 3 bedroom town homes, provided in three separate buildings over a common basement level containing 28 car spaces.

Architecture by DKO and Studio Tate. Landscapes by Jack Merlo.

Completion is expected late 2017 so be quick this will not last long!!

The above information provided has been furnished to us by the vendor/s. We have not verified whether or not that information is accurate and do not have any belief in one way or the other in its accuracy. We do not accept any responsibility to any person for its accuracy and do no more than pass it on. All interested parties should make and rely upon their own inquiries in order to determine whether or not this information is in fact accurate.

3 2 3

Price SOLD
Property Type residential
Property ID 284

AGENT DETAILS

Ken Tang - 0425810845

OFFICE DETAILS

Alphalynx Real Estate
246 Toorak Rd South Yarra VIC 3141
Australia
03 9826 8988