

Sold

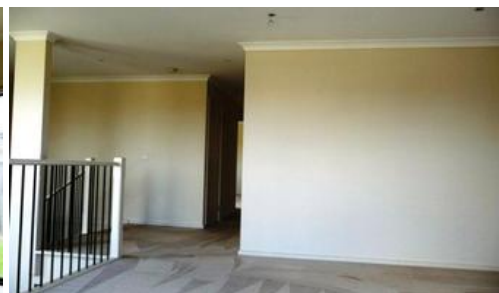


ALPHALYNX



ProMark
International

25 Callaway Boulevard, Sunshine West



SPACIOUS FAMILY HOME, IDEAL FOR ENTERTAINING

Located at Callaway Park off Fitzgerald Road in Sunshine West, this area is fast developing into one of Melbourne's most premium suburbs.

This open and well-lit property comprises of a tiled entrance hall downstairs leading onto a spacious kitchen/family/dining room. A generously sized open kitchen with 4 gas burner stove, range hood, under bench oven and dishwasher, makes entertaining easy. This family home has an en-suite and walk in robe to master bedroom, 4 large bedrooms with built in robes, and second living area with balcony upstairs.

Private and spacious garden at rear and side of house with direct access off the living area plus internal access to double remote lock up garage.

The above information provided has been furnished to us by the vendor/s. We have not verified whether or not that information is accurate and do not have any belief in one way or the other in its accuracy. We do not accept any responsibility to any person for its accuracy and do no more than pass it on. All interested parties should make and rely upon their own inquiries in order to determine whether or not this information is in fact accurate.

4 2 2

Price

SOLD

Property Type

residential

Property ID

290

Land Area

411 m2

Floor Area

269 m2

AGENT DETAILS

Ken Tang - 0425810845

OFFICE DETAILS

AlphaLynx Real Estate
246 Toorak Rd South Yarra VIC 3141
Australia
03 9826 8988

ALPHALYNX REAL ESTATE
246 TOORAK RD SOUTH YARRA VIC 3141
AUSTRALIA
03 9826 8988